

FAZER

www.yamaha-motor-europe.com

 **YAMAHA**
Touching Your Heart

2004
FZ6 Fazer

 **YAMAHA**



Silver Tech



Galaxy Blue



Blue Stone



FZ6 Fazer TECHNICAL SPECIFICATION

ENGINE	
Type	4-stroke, liquid-cooled, 4-cylinder, 16 valves, DOHC
Displacement	600 cc
Bore and stroke	65.5 x 44.5 mm
Compression ratio	12.2 : 1
Max. power	72 kW (98 HP) @ 12,000 rpm
Max. torque	63.1 Nm (6.4 kg-m) @ 10,000 rpm
Lubrication	Wet sump
Fuel supply	Fuel injection
Clutch type	Wet, multiple-disc
Ignition	TCI
Starter system	Electric
Transmission	Constant mesh, 6-speed
Final transmission	Chain

CHASSIS

Frame	Diamond
Front suspension	Telescopic forks
Front wheel travel	130 mm
Rear suspension	Swinging arm (Linkless-type monocross)
Rear wheel travel	130 mm
Front brake	Dual discs, Ø 298 mm
Rear brake	Single disc, Ø 245 mm
Front tyre	120/70 ZR17M/C (58W)
Rear tyre	180/55 ZR17M/C (73W)

DIMENSIONS

Overall length	2,095 mm
Overall width	750 mm
Overall height	1,215 mm
Seat height	795 mm
Wheelbase	1,440 mm
Min. ground clearance	130 mm
Dry weight	187 kg
Fuel tank capacity	19.4 litres
Oil tank capacity	3.4 litres

Always wear a helmet, eye protection and protective clothing. Yamaha encourage you to ride safely and respect fellow riders and the environment. Images shown in this brochure depict professional riders performing under controlled conditions.

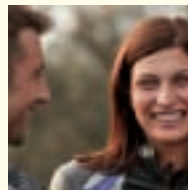
Specifications and appearance of Yamaha products shown here are subject to change without notice and may vary according to requirements and conditions. For further details, please consult your Yamaha dealer.

Dealer

Importer



*Good days are
Fazer days*

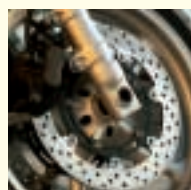
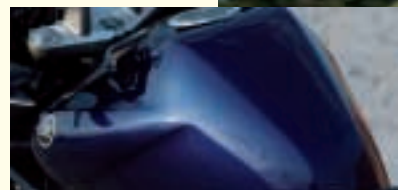


Meet the new Fazer 600 – a motorcycle that's into having good times in all kinds of ways. Doesn't matter what kind of riding life you're into, the FZS600 fits. Here's a motorcycle developed from the original Fazer, a machine that grabbed the biking world's attention and created a whole new breed of middleweight all-rounder that does pretty much everything you want it to.

You want to do it all? Then the Fazer 600 is with you all the way – whether you're styling through the city on your way to work, heading out in the evening to meet some mates or cutting through the country on a long weekend away from it all. All you have to do is take the curves as they come, live life for the fun of it, and have good days and great nights.



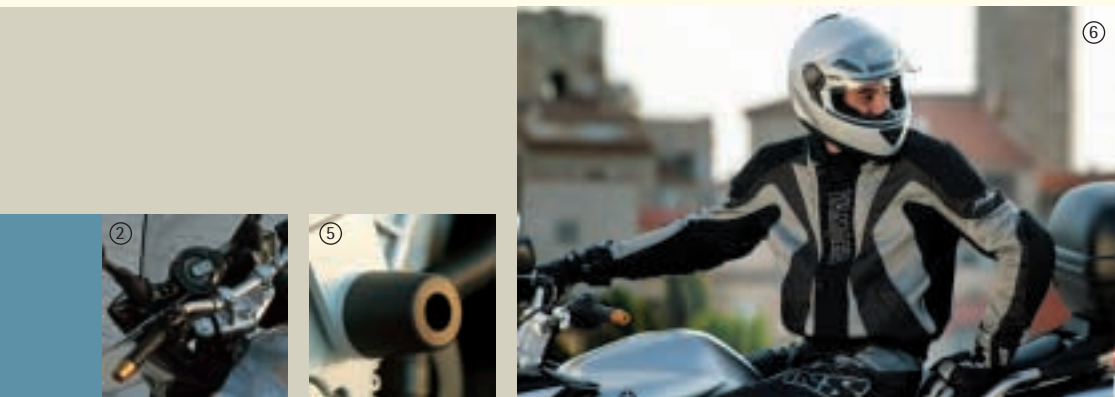
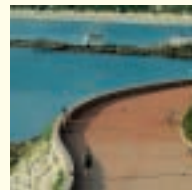
Fazer tech for real-world riding



The Fazer 600 is designed for real life, with the kind of all-round performance that makes every ride feel right. Achieving that kind of versatility requires open-minded use of the latest motorcycling technology, which is why this all-new Fazer uses a lightweight, super-rigid aluminium frame – the first in its class – for sharp, stable handling. And it's also why the Fazer takes its basic engine spec from our R6 Supersport bike for super-smooth power. We didn't stop there

though, we kept going, taking technology from all directions, just so long as it would make the bike perform better, handle better and be more fun to ride. We added the latest digital fuel injection, superb brakes, great-sounding upswept pipes with a catalyzer for cleaner emissions, plus trick low-turbulence bodywork, 43 mm diameter front forks and lightweight Monocross rear suspension.

Complete the Fazer look



1. Sub-cowling

Complete your Fazer's sharp aerodynamic looks with this sub-cowling. Available in matching silver.

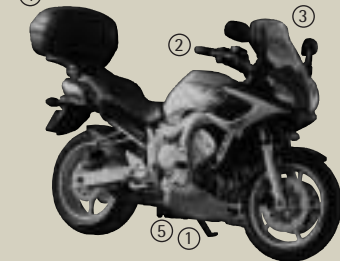
2. SBK handlebars

Take your Fazer a little closer to the track with some SBK handlebars – for a more sporty riding position.

3. Raised windscreen

If your kind of riding needs better wind-blast protection, this raised windscreen gives you exactly that.

4



4. Luggage rack and top case

Or if you're the kind of rider who never travels light, you'll be needing this rugged rack which can also carry a 44 litre top case.

5. Roller protectors

Help keep your Fazer safe from life's little knocks – these bolt-on nylon roller protectors help prevent damage to engine or chassis.

Also available is a super-light carbon-fibre front fender to give your Fazer a touch of the racetrack. Saves unsprung weight too.

6. Fazer jacket

The Fazer Powerbike jacket is cut for all kinds of riding, all kinds of living, just like your Fazer.



Yamaha highly recommend you the use of genuine Yamaha accessories and clothing. Contact your local dealer or visit our website: www.yamaha-motor-acc.com



Fazer 600 equipped with accessories